

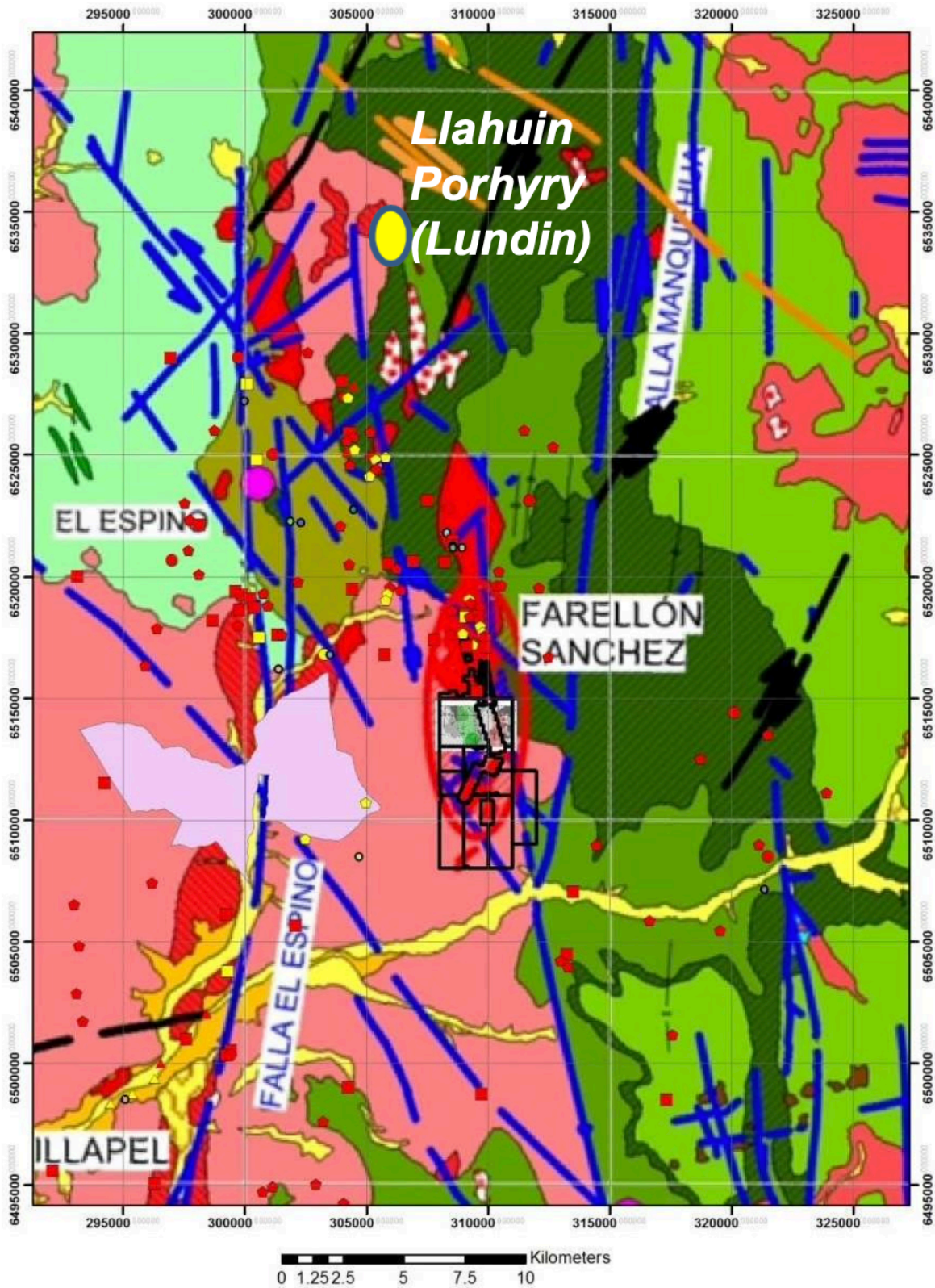


BII

**INVEST TODAY,
PROSPER TOMORROW**

COMPRA/VENTA
YACIMIENTO
ILLAPEL

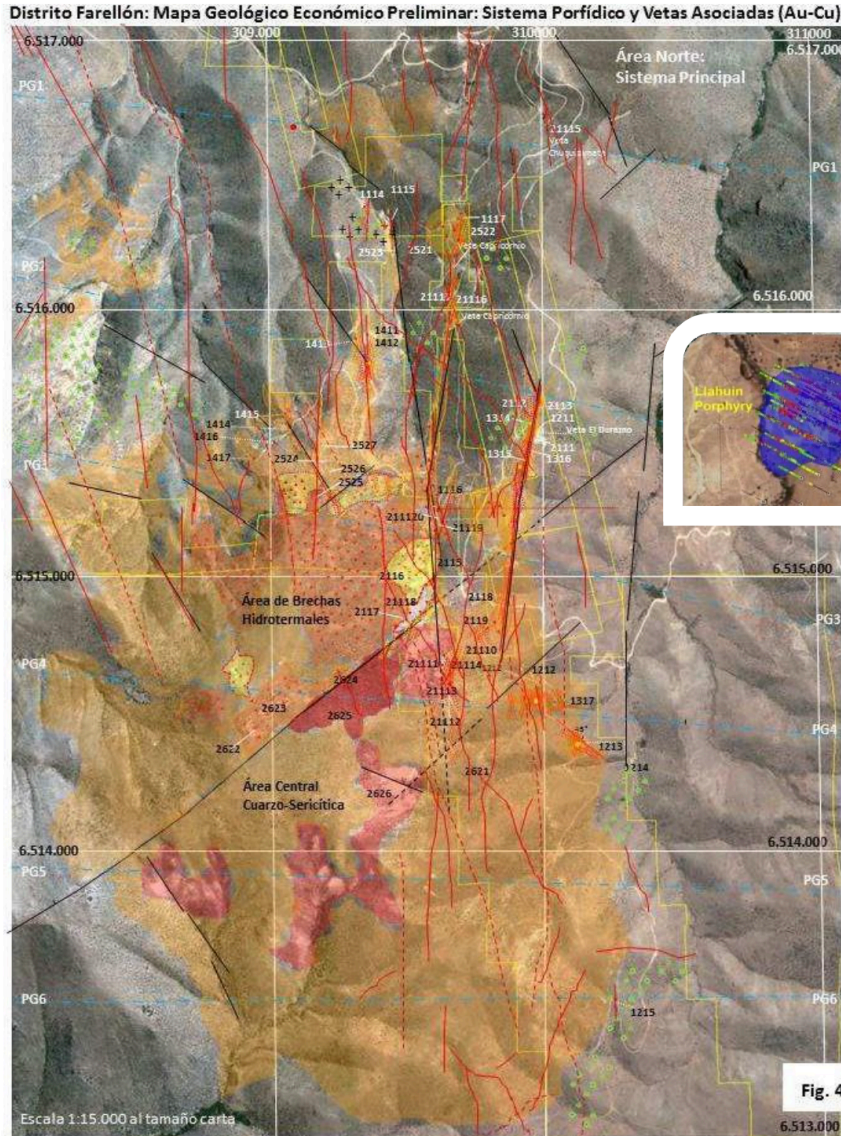
REGIONAL GEOLOGY





BII

PREVIOUS HB WORK (2014)



- Site visit completed in June in the Farellon District

- Number of kilometeric long Au/Cu/Ag veins recognized. Southern extension of veins coalesce in large hydrothermal alteration zones, including silica/clay areas, hydrothermal breccias and stockwork zones.

- Vein swarm at Farellon could represent the epithermal uppermost part of a conceptual porphyry copper system at depth.

- A total of 82 samples were collected and analyzed for geochemistry. The geochemical data confirms that the district displays a high level alteration-mineralization system of epithermal origin. The geochemistry does not prove but is permissive of the proposed conceptual porphyry underneath the vein system

- Late Summer Recommendations: To run legal due diligence and

consolidate land around the zone identified by consultant as the area more favorable to host a potential porphyry Cu-Au deposit.

- The exploration model should test with geophysics whether the area host a blind porphyry copper deposit or the mineralization in the area is restricted to subvertical transcurrent fault-hosted veins.

CU/AU DISTRICT: MINED VEINS UNTOUCHED





BII

Due Diligence Field Details

HSE

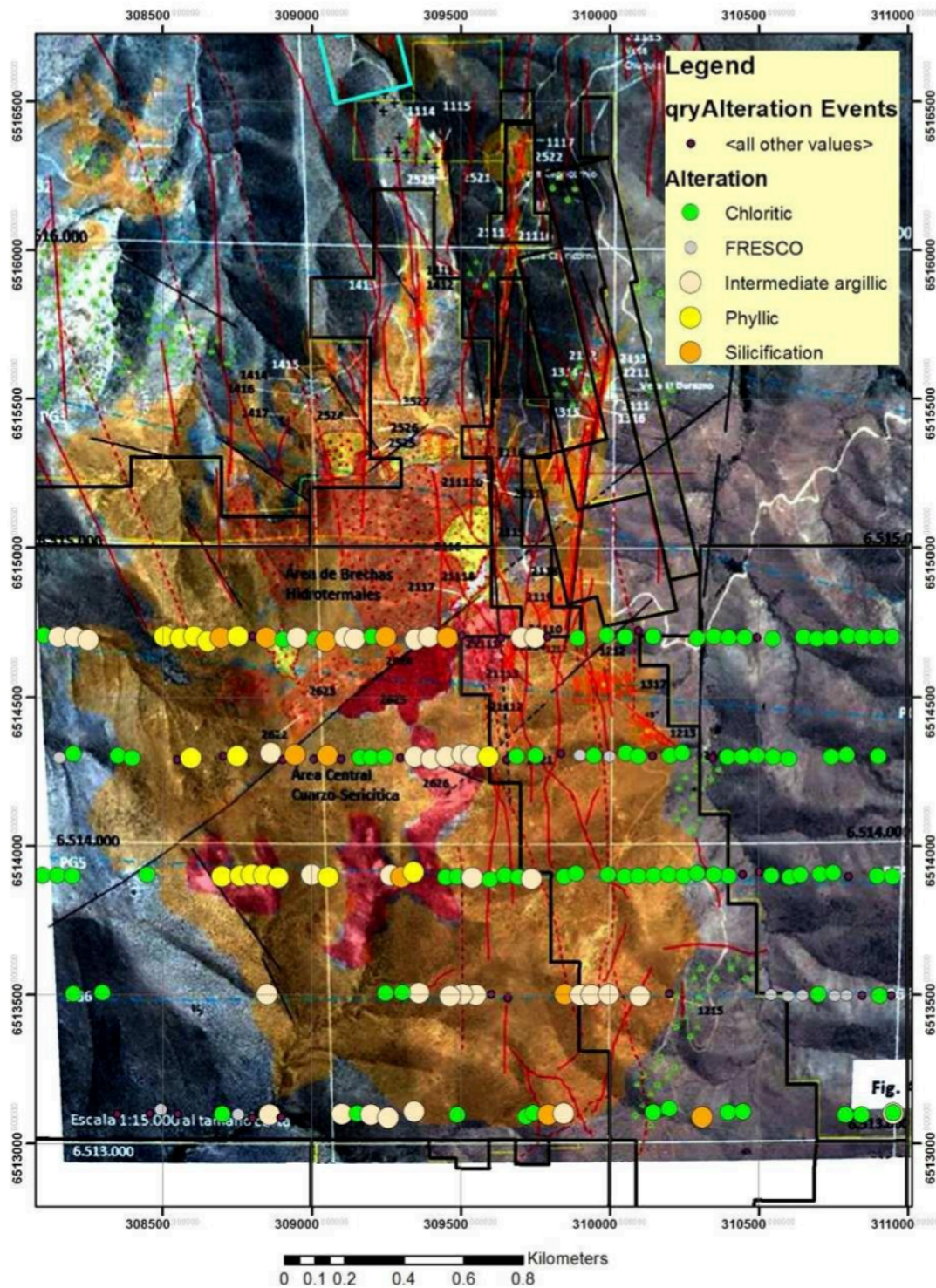
- 2960 man hours
- (October/November) no Incidents to report

Costs October/November Illapel DD program		
Work	Details	Cost
Geology Contractor	5 Geochem Lines + Grab sampling program: Totalling 202 samples	\$ 64,657
Lab	235 Samples ICP (total whole rock)	\$ 16,450
Geophysical Contractor Mag	18 Lines: 54 km	\$ 14,946
Geophysical Contractor IP	5 Lines: 15 km	\$ 44,268
	Total	US\$ 140,321

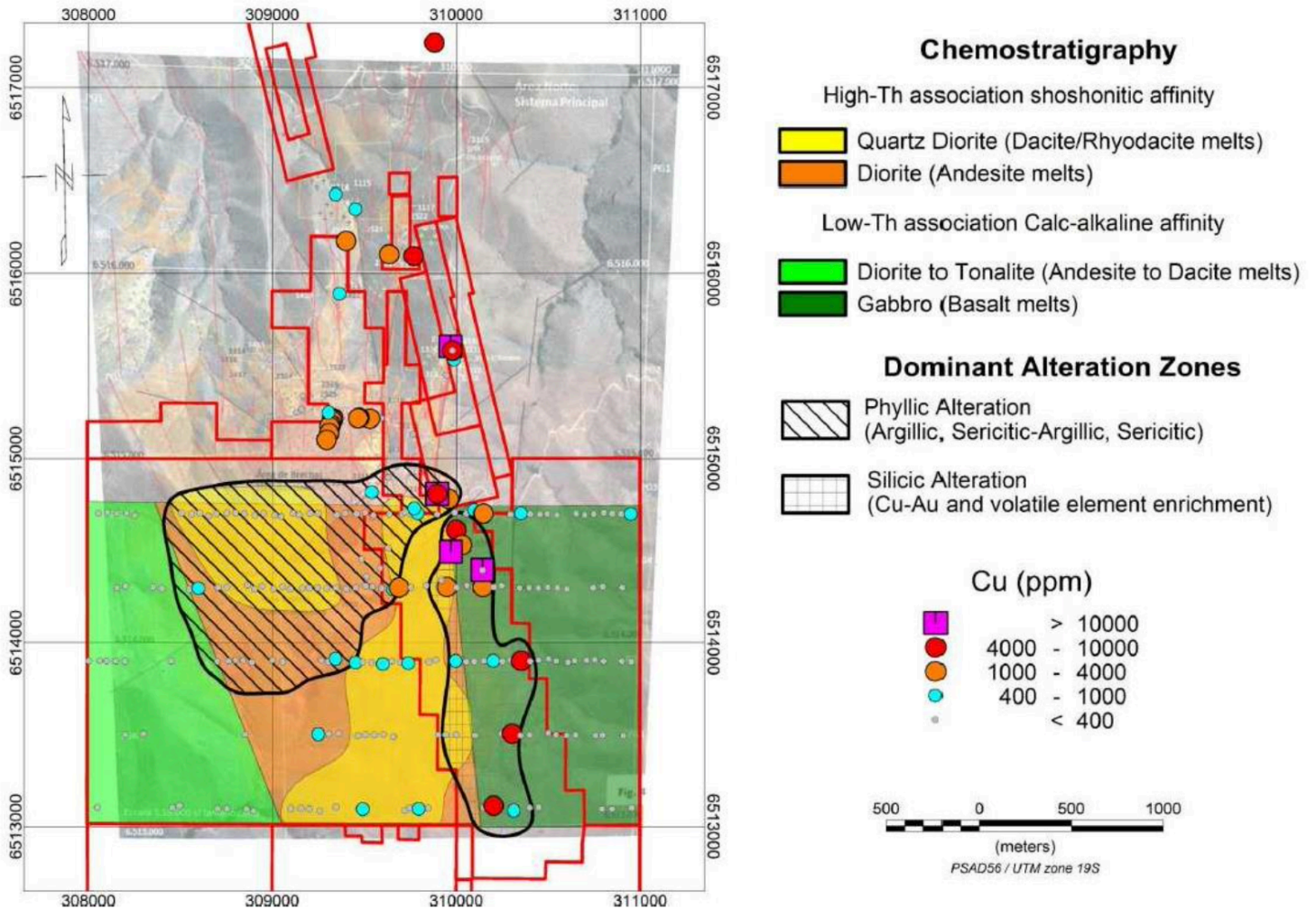


BII

MAPPED ALTERATION



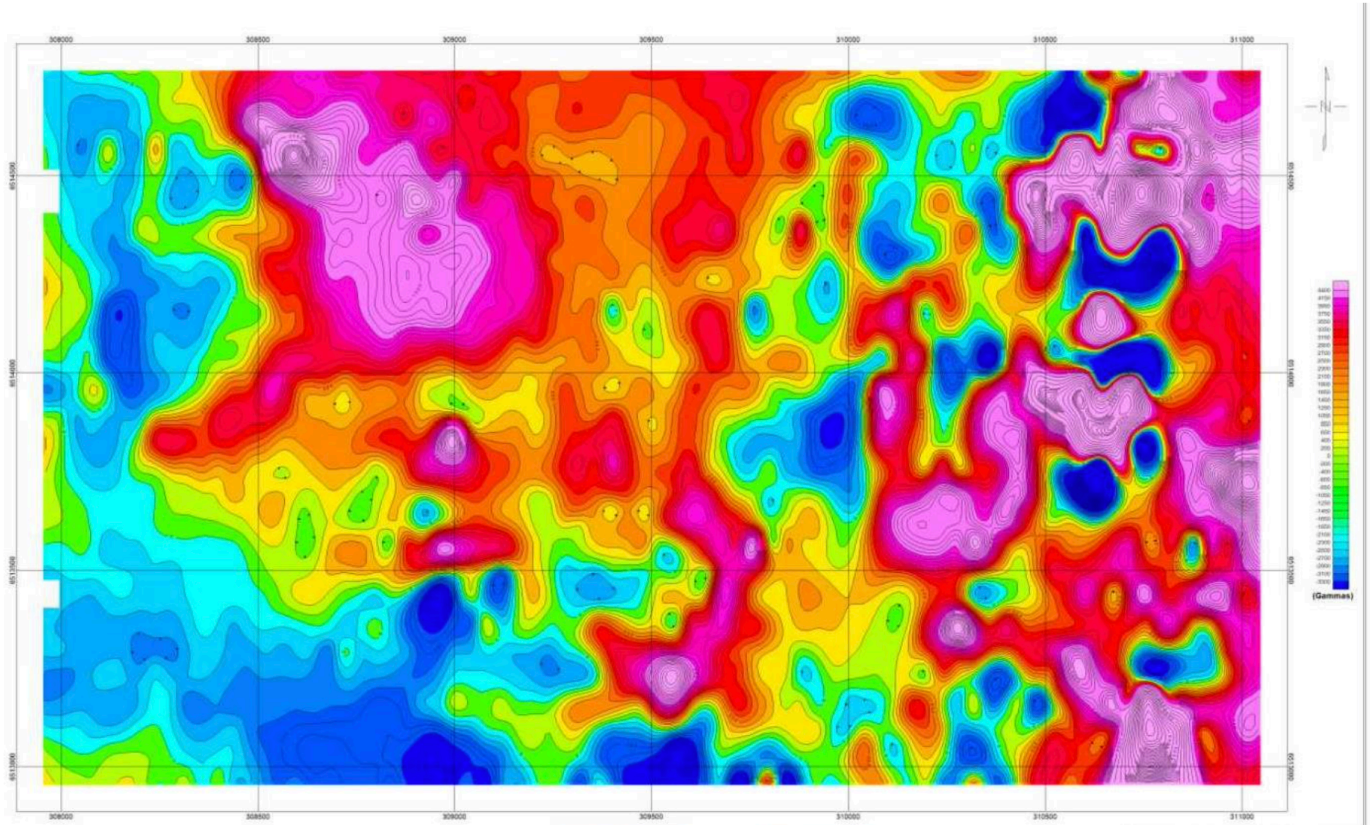
GEOCHEM RESULTS



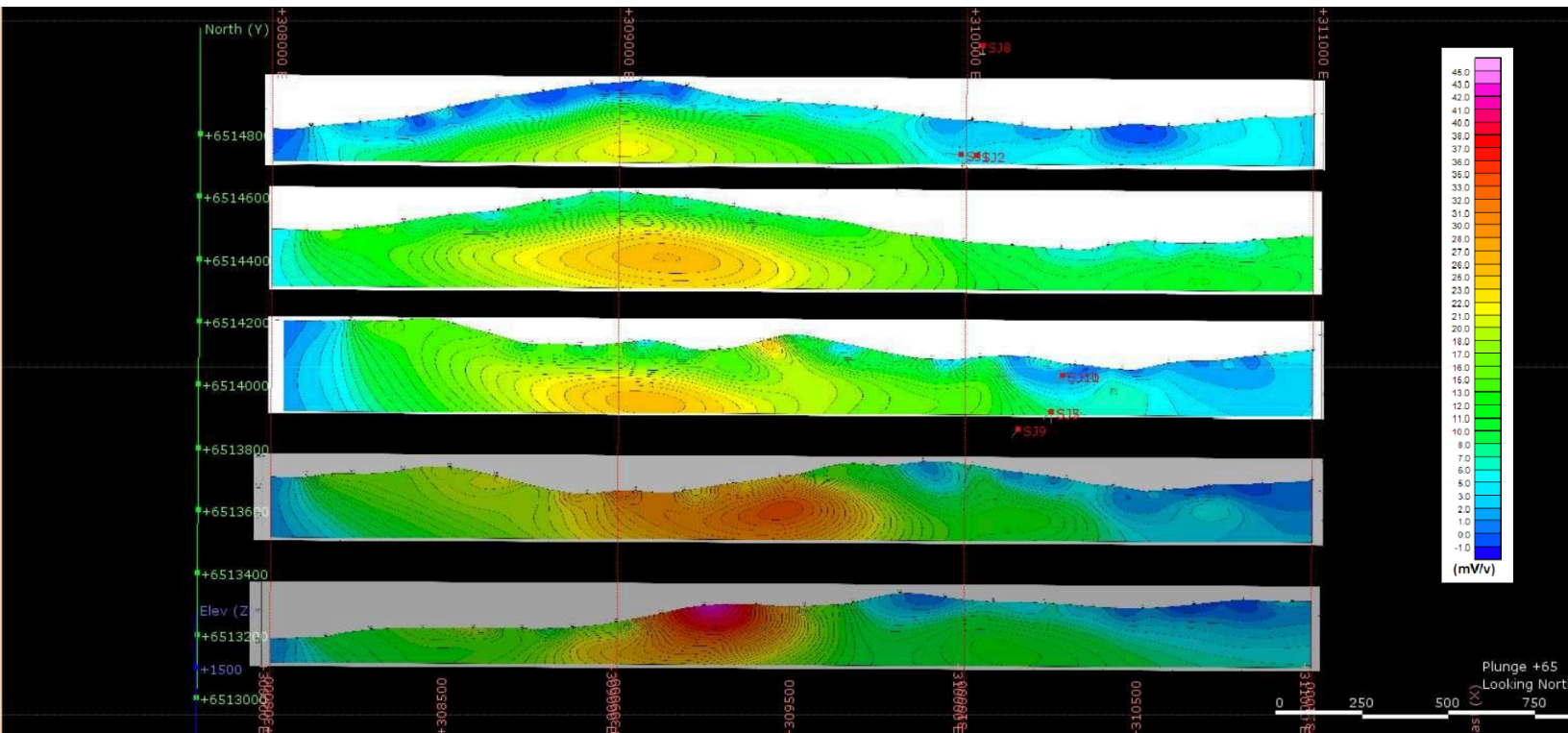


BII

Magnetic Results



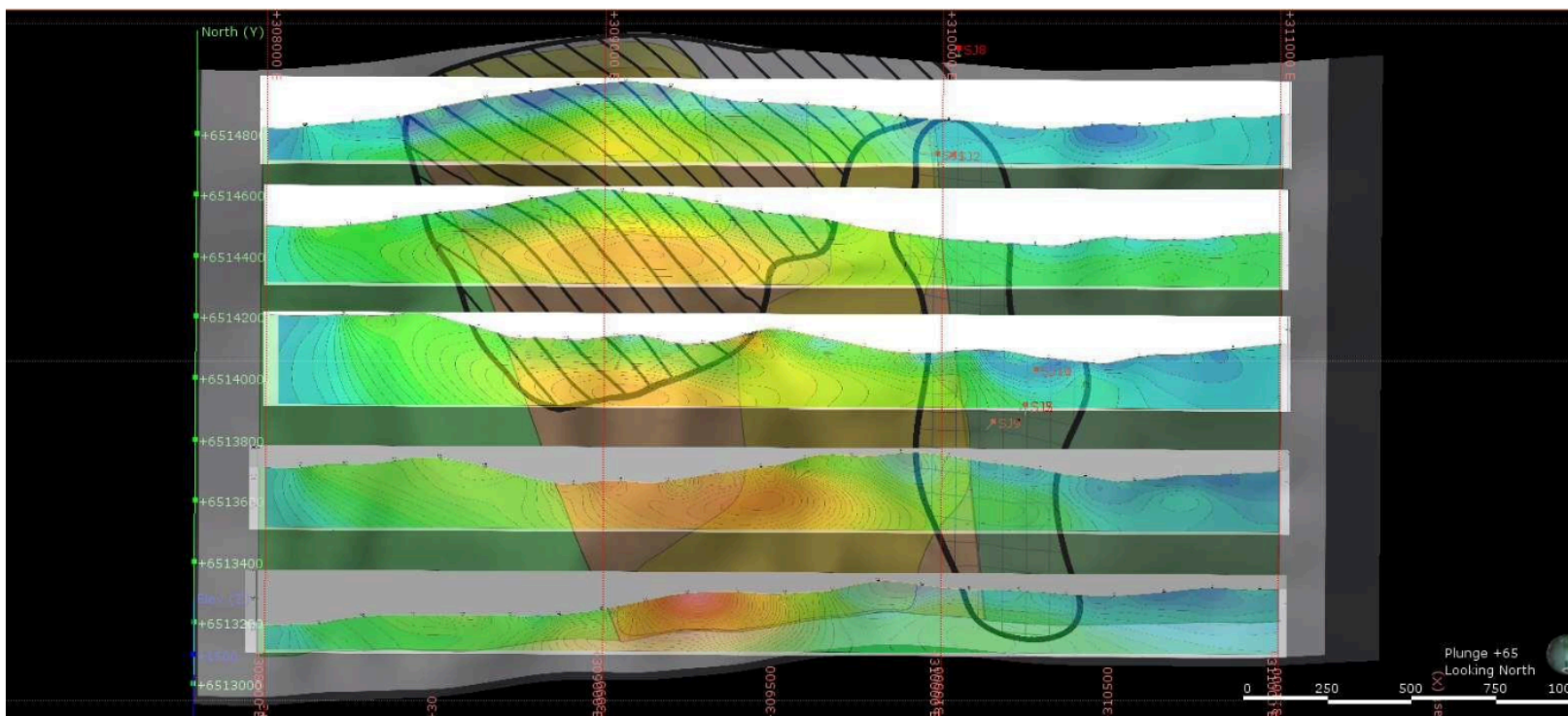
IP Results Results





BII

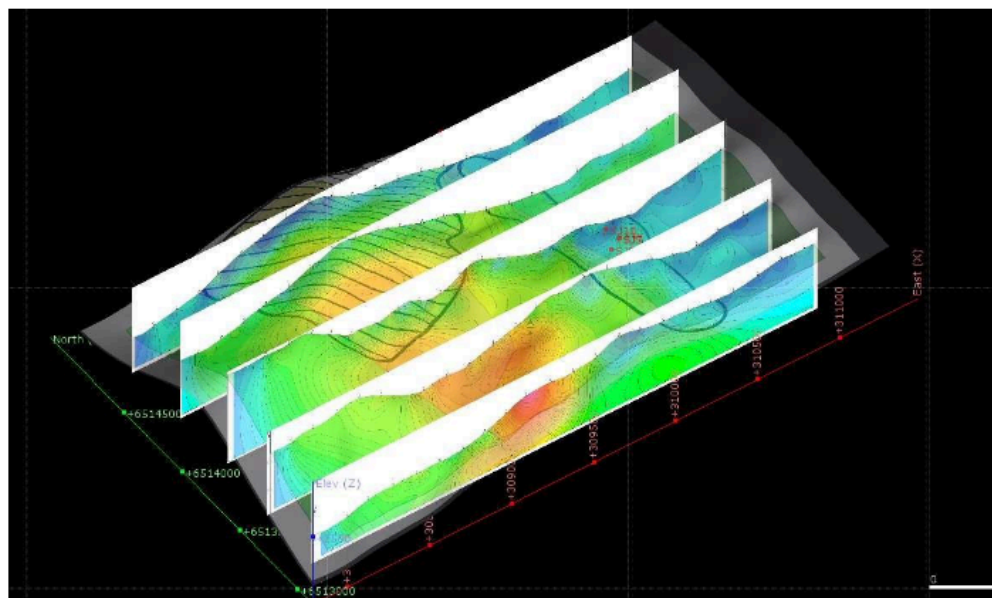
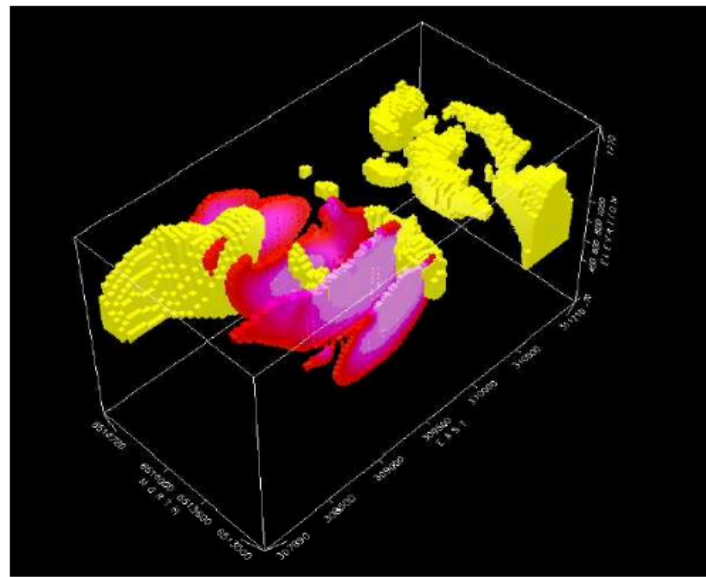
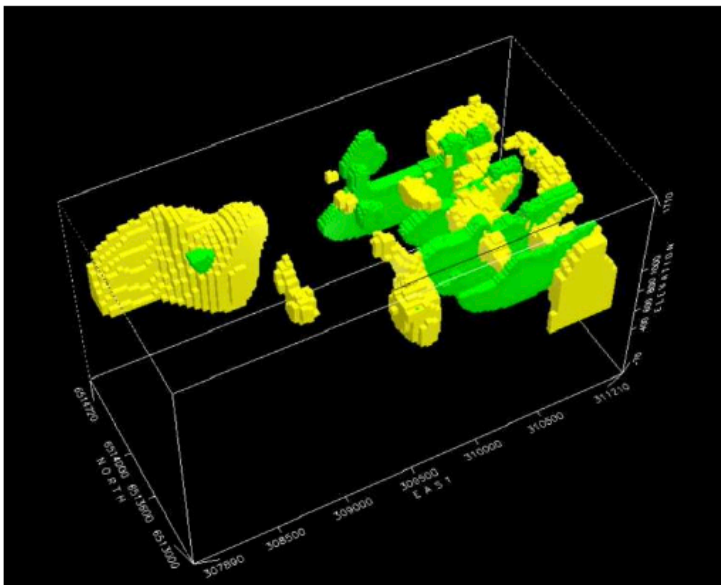
Geochem Over IP





BII

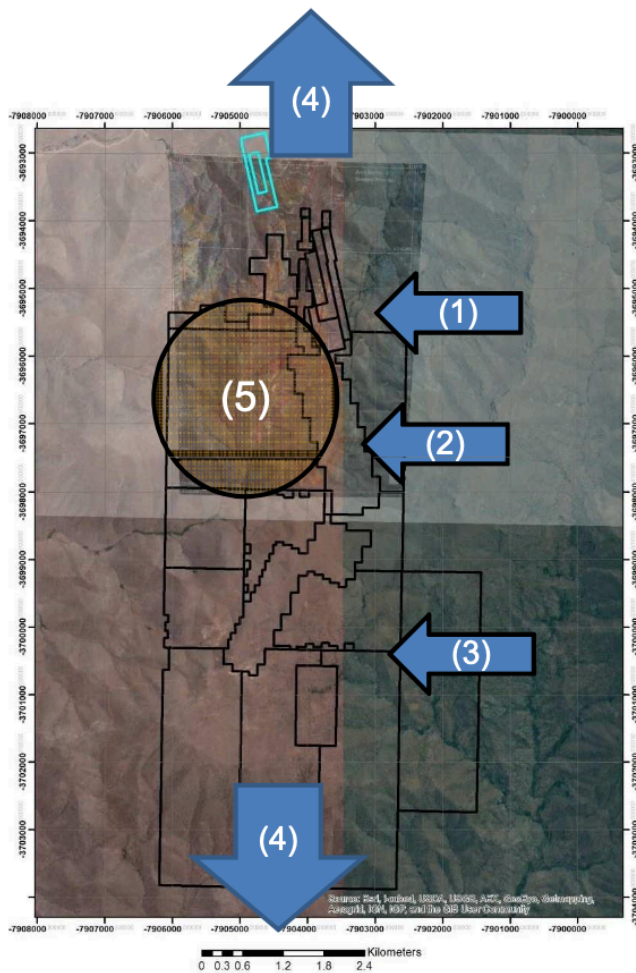
3D Views





BII

Proposed Program



H1 2015

- 1) Northern Extension
Geophysics+Geochem to the North (~ 3 lines, ~ 6 km)
- 2) Infill Lines (~4 lines ~ 10 km)
- 3) Southern Extension
Geophysics+Geochem to the North (~ 4 lines, ~ 12 km)
- 4) District Reconnaissance

Budget: \$ 200,000

H2 2015

- 5) 2,000 m drilling

Budget: \$ 550,000

Regional Potential

